

Fairy Tales in Yoghourt

(Nantes, FR)



Based in Nantes, France, multi-instrumentalist Benoît Guchet plays in numerous other acts (**Bantam Lyons**, **Yes Basketball**), and does here what he likes the most and probably does the best: writing songs.

Bare folk pieces, weird pop arrangements, crystal-clear melodies; those are the bounds between which **Fairy Tales in Yoghourt** fastly crawls.

If you listen close enough, people like **Tom Jobim**, **Nick Drake**, **Steve Reich**, **Cat Power**, **Deerhoof** sometimes appear. A lot of total strangers stand here too.

First opus “*Shape Mistakes*” will be released on Nov, 4 on Pale Figure Records.

Shape Mistakes



Four Fairy Tales in Yoghourt records have been released since “Shape Mistakes”’s first sketches and its official release.

Four records, twelve years and three different French Republic presidents.

Quite a tough gestation, which goal was paradoxically to make all songs the most fresh and straightforward as possible. Shaping mistakes, so as to transform them into essential gestures, is a hard but rewarding way.

For don't get me wrong: the seven minutes from very pop opening *Mania* were there from the start, so were dark atmospheres of *Lose this Disease* and title track *Shape Mistakes*, baroque freshness of *Shocky Toppy* / *Visions of Emily Brontë*, indie-glam climax of *Find Them*.

Only details have changed, the ones you can't name but you hear altogether: arrangements, sound work, intentions. So that every single song is only what it was at first; or what it wanted to be.

Those songs are like rooms you cross one by one without a hallway. Most of them feature scenes of introspection: *Wild Lovers (Animals)* is a bestiary listing our fearsome fellows, *Pencils and Troubles* talks about isolation by art. Then sometimes, those rooms have windows on the street: *Campers* and its missed revolutions, *Imitated Glow* and other's solitude.

Epitomized by Enora Le Guillou's cover drawing, darkness and naivety mix up and overlay without ever excluding each other. This paints the picture of either a melancholic child, or a marveling bedridden. From long dark and explosive electric trips to short jazz-folk pieces, that in-between shapes the path of Shape Mistakes.

Released on November 4, 2022 on Pale Figure Records. [Listen here](#)

Discography



Shape Mistakes
(private - LP, 2022)



L'épopée d'une tête couronnée
(Mini-LP, 2021)



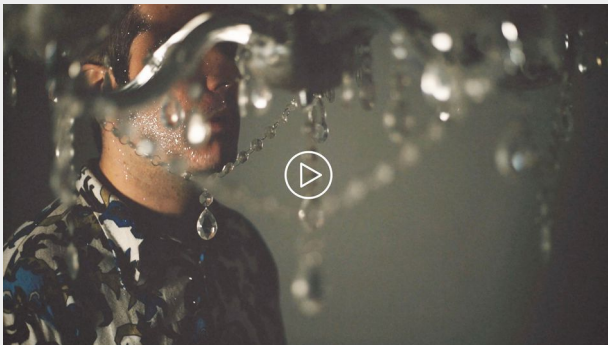
Couple of Minds / The Films and the Songs of the Seas
(SP, 2019)

- [Teenage Tales & Souvenirs](#) with artists *Teenage Bed* and *Souvenirs* (2018, Split SP)
- [Demos '07 - Anthology part 1](#) (2017, archives LP)
- [EP '09](#) (2009, EP)

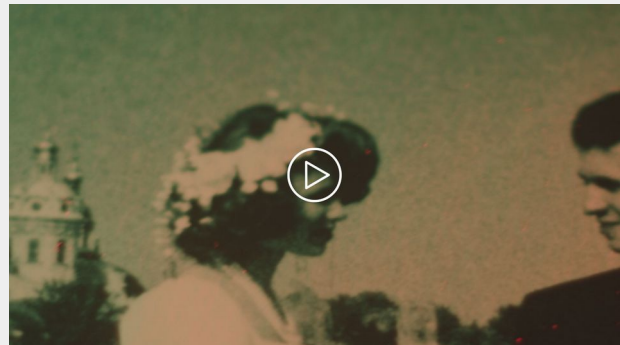
Shared scenes

Papa M/David Pajo, Conan Mockasin, Her's, The Magic Gang, Michelle Blades...

Videos



Shape Mistakes
(music video, 2022)
directed by Aloïs Lecerf & FTIY



Imitated Glow
(music video, 2022)
directed by Tristan d'Hervez

- **Live session:** [Voyons Voir](#) - Mania / Animals (private link, 2022)
- **Music video** [Christmas, inc](#) (2021), dir. FTIY
- **Music video** [Les Valseuses](#) (2020), dir. FTIY
- **Music video** [Tour de France](#) (2020), dir. Clovis le Pivert
- **Music video** [The Films and the Songs of the Seas](#) (2019), dir. Benjamin Ferré
- **Music video** [Forever and for the Glory](#) (2017), dir. Trainfantome
- **Unplugged live session:** [Vidéo Sauvage](#) - Campers / Couple of Minds (2012)

Social Networks

[Instagram](#)

[Youtube](#)

[Facebook](#)

Website / Newsletter

<http://fairytale sinyoghourt.fun>

Streaming Platforms

[Spotify](#)

[Apple Music](#)

[Deezer](#)

[Bandcamp](#)

[Soundcloud](#)

Digital distribution by Wiseband.com

Booking

Patchrock

11 rue du Manoir de Servigné - 35000 Rennes - FRANCE

+33 2 99 30 45 76

guillaume@patchrock.com

Direct Contact

Email : ftiymusic@gmail.com

Telephone : +33 6 71 09 33 14

Address: Benoît Guchet - 43 quai de la Fosse - 44000 NANTES - FRANCE